

Panasonic Upgrade to v6.01000

Telquest Tech Support

Download and install from the following link:

It will install the latest (v7.8.1.1) Maintenance Console/Programming Tool.

Do not remove any older versions in your computer.

[Link to Panasonic Maintenance Console v7.8.1.1](#)

After you have completed installing the Maintenance Console/Programming Tool

create a new folder on your Desktop and name it Pan v6.01000 Update

download and unzip the following link into the Pan v6.01000 Update folder

[Link to Panasonic v6.01000 Upgrade Files](#)

This portion of the instructions are for a brand new installation.

Do Not put the SD Card into the KSU.

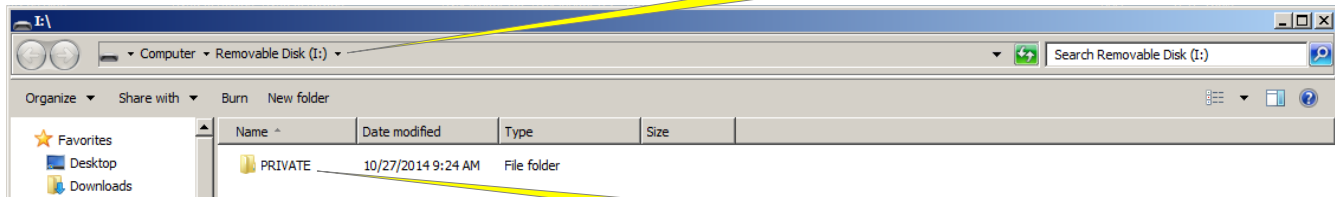
If you are Updating a KSU that is already in service, go to Page 4 first.

Next, place the Panasonic SD Card that came with the system into a SD Card Reader.

Navigate to the Drive where the SD Card is located, open it and Delete the “Private” folder.

SD Card Reader:

1. Open the Drive with the SD Card



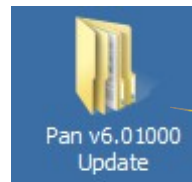
2. Delete this...

Special Note:

The KSU will need to be Re-Registered when the upgrade is completed.

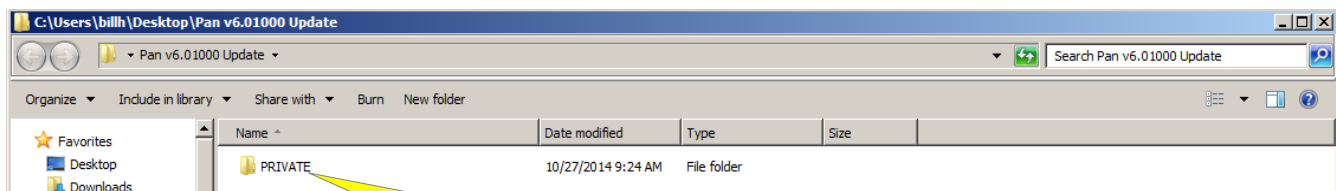
See Page 9

Next, navigate to the “Pan v6.01000 Update” folder and double click it to open it.



1. Double Click this...

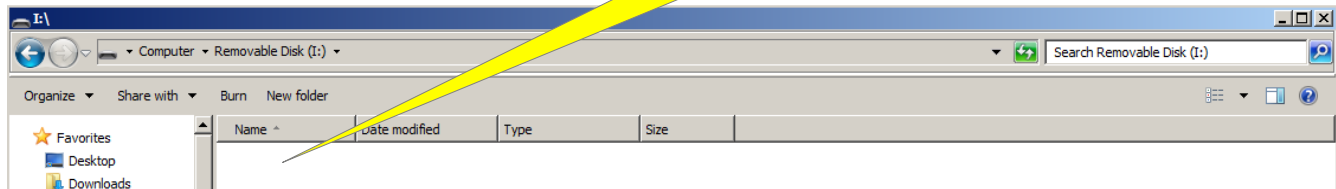
“Pan v6.01000 Update” folder:



2. Click and Drag the Private Folder from here...

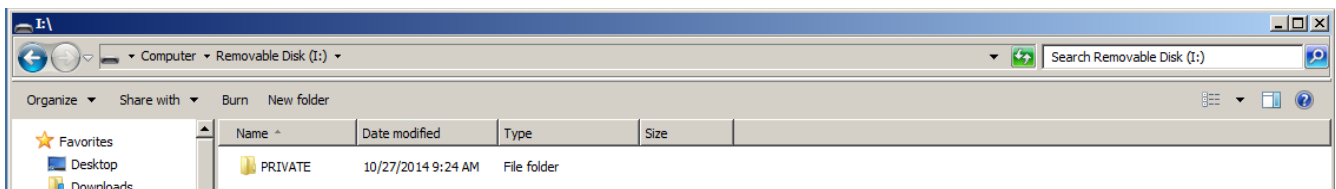
To the SD Card Reader...

SD Card Reader:



This how the SD Card Reader will look like after you Drag the Private Folder into it.

SD Card Reader:



Page 3

Here is what you have done so far.

Deleted the old version Private folder from the Panasonic SD Card

Dragged the new version Private folder on to the Panasonic SD Card.

Now to continue:

Power down the KSU.

Place the System Initialize/Normal switch in the System Initialize position.

Now, remove the SD Card from the SD Card Reader and install it into the KSU.

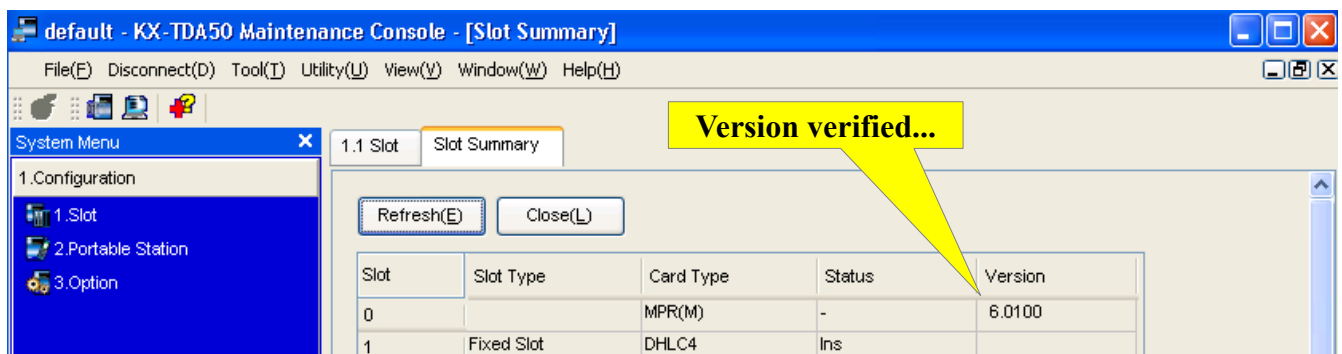
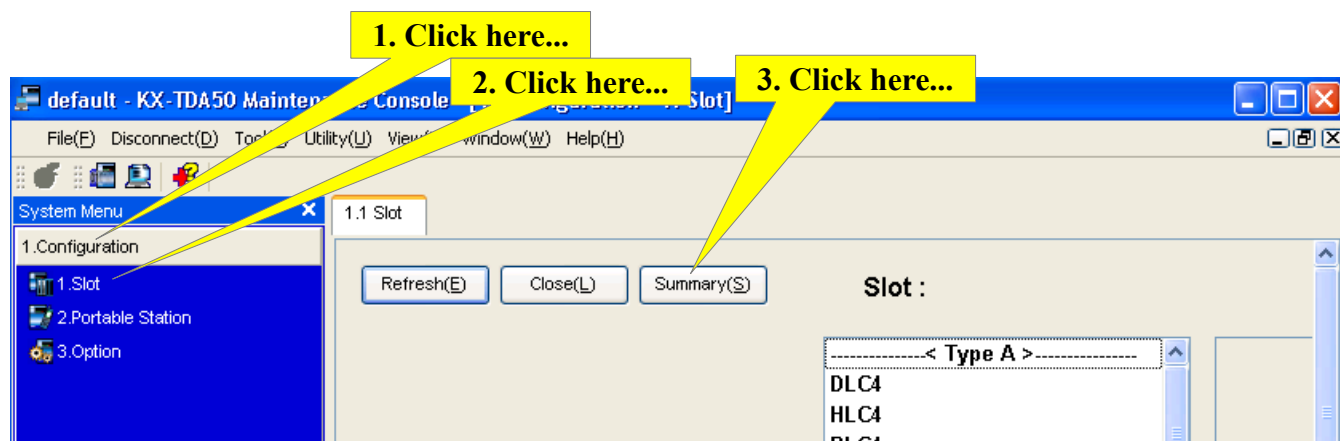
Power up the KSU.

When the RUN LED starts flashing, place the switch in the Normal position.

The KSU will take about a minute or so to initialize with the v6.01000 software.

Verify that the new version is the KSU:

Open the Panasonic Programming Tool and navigate to the following locations:



You only need to use these instructions (Pages 4-8) if you are Updating an existing KSU.
You must save the existing configuration before Updating.

If you don't, you will need to re-program the KSU by hand.

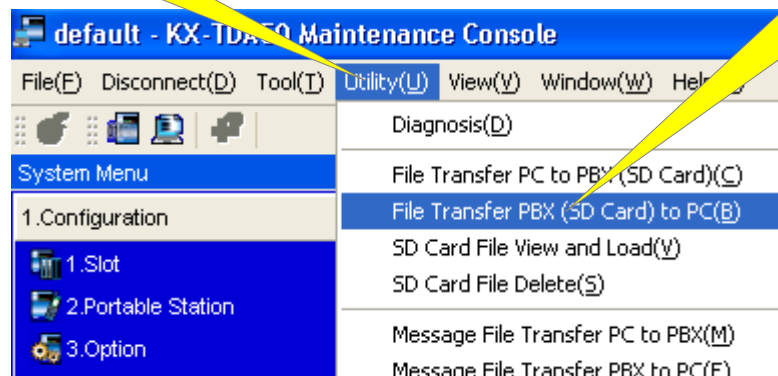
Create a new folder on your Desktop and name it “Pan DSSYS Save”

Open the Panasonic Programming Tool and connect to the KXTDA-50 KSU.

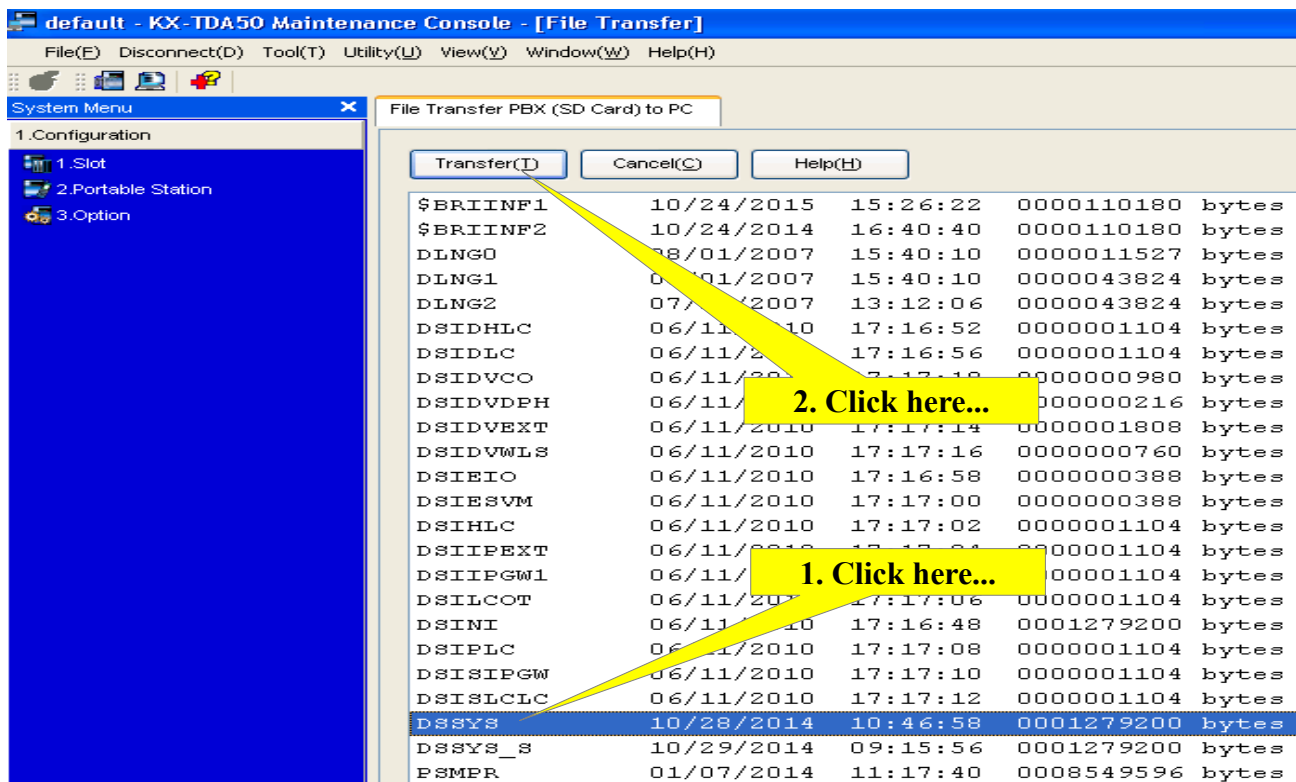
Then:

1. Click here...

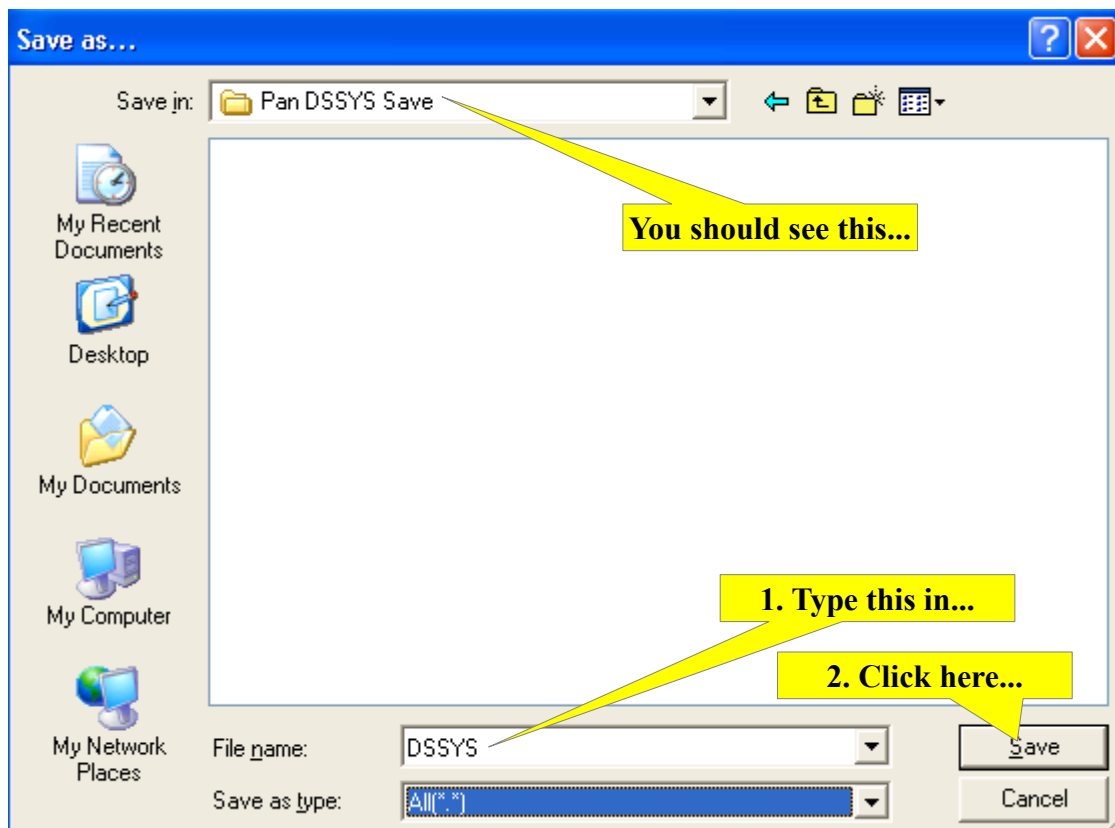
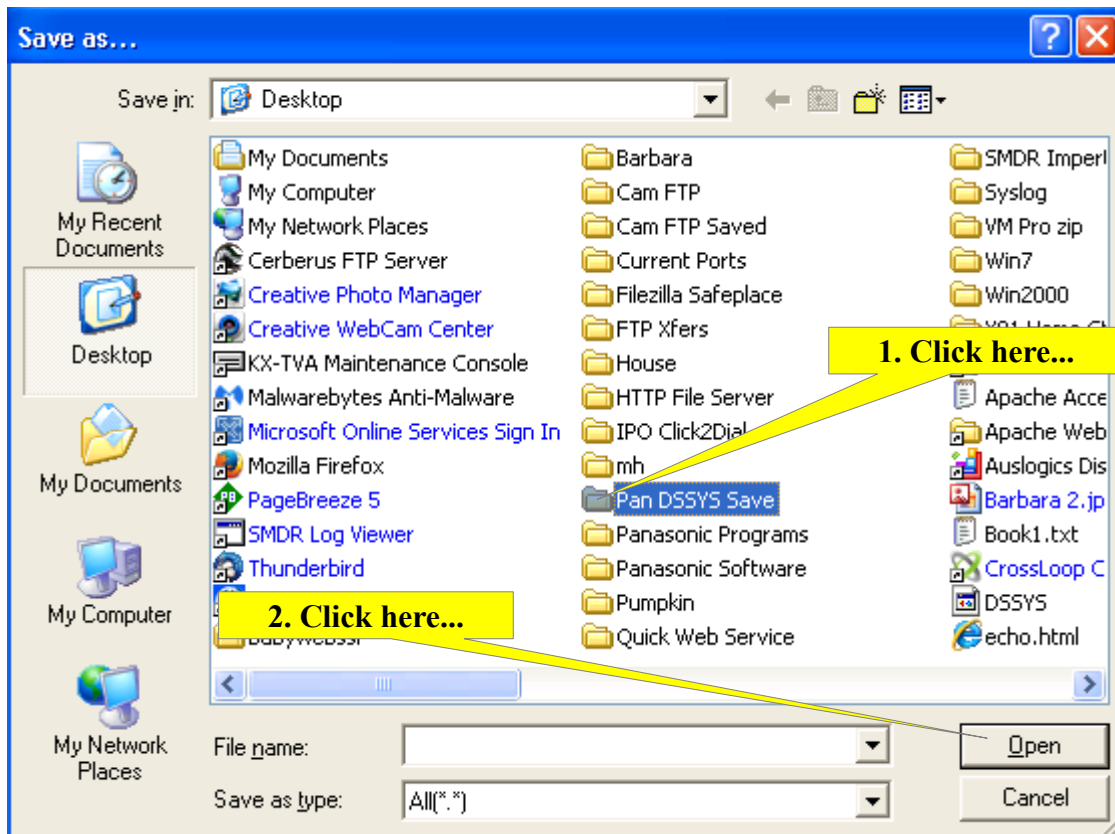
2. Click here...



You will see this screen:



Next, you will see something like this:

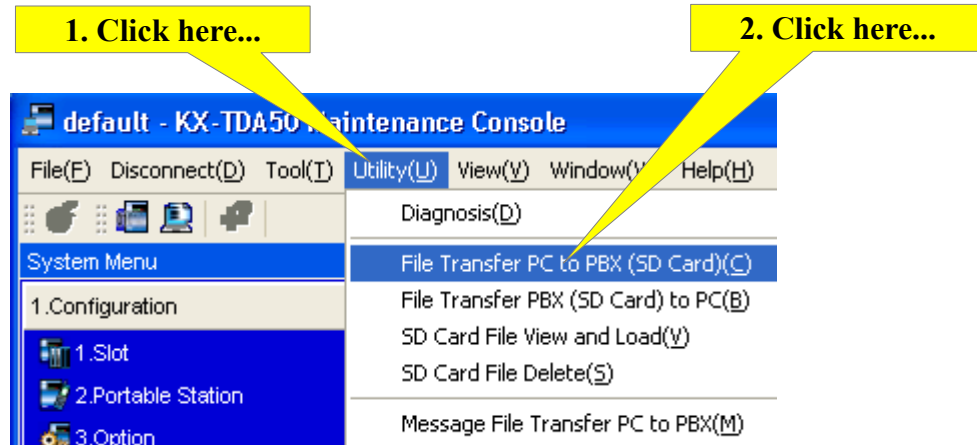


Page 6

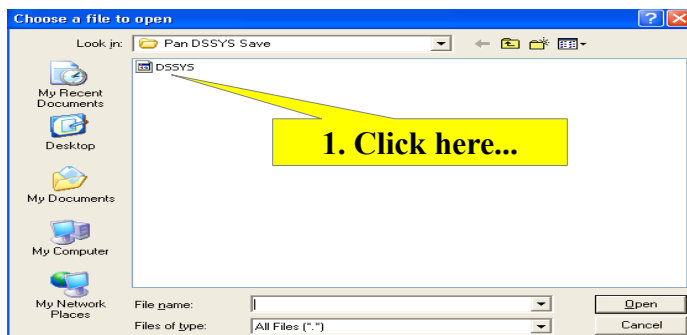
You now have saved a copy of the KSU's configuration in the “Pan DSSYS Save” folder.

Now go to Page 1 and begin the Update.

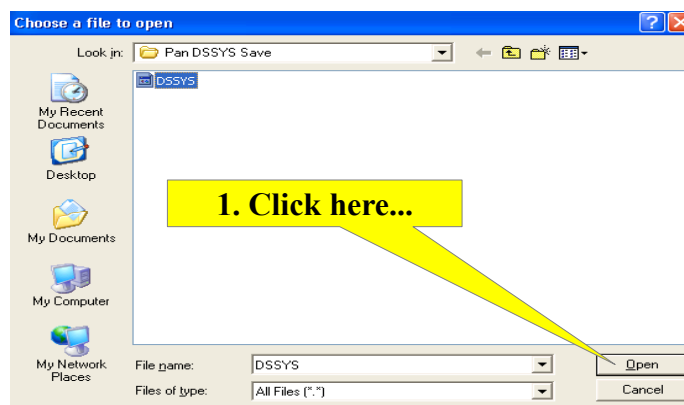
After you have completed it, you will need to send your saved configuration back into the KSU.



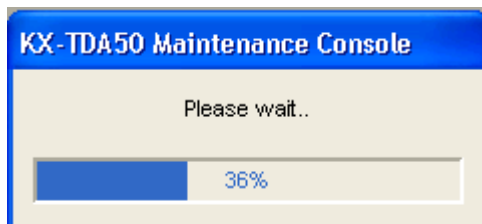
You will see this:



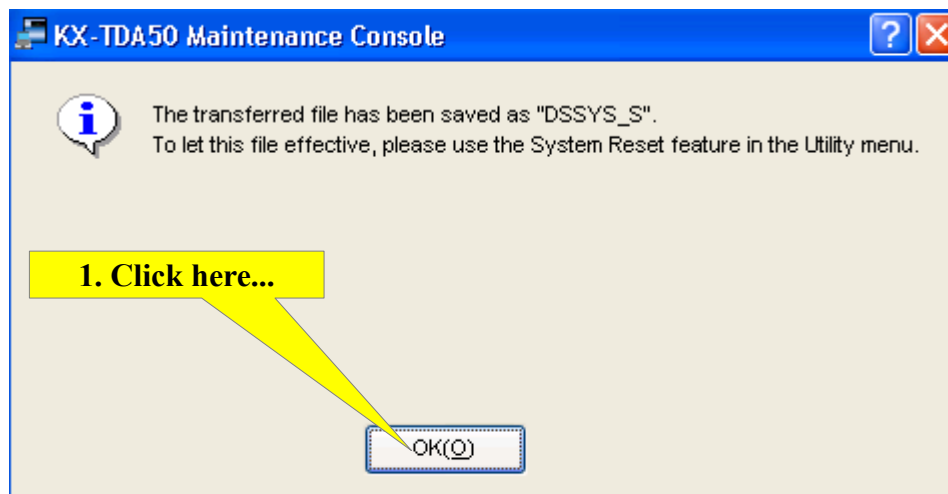
You will see this:



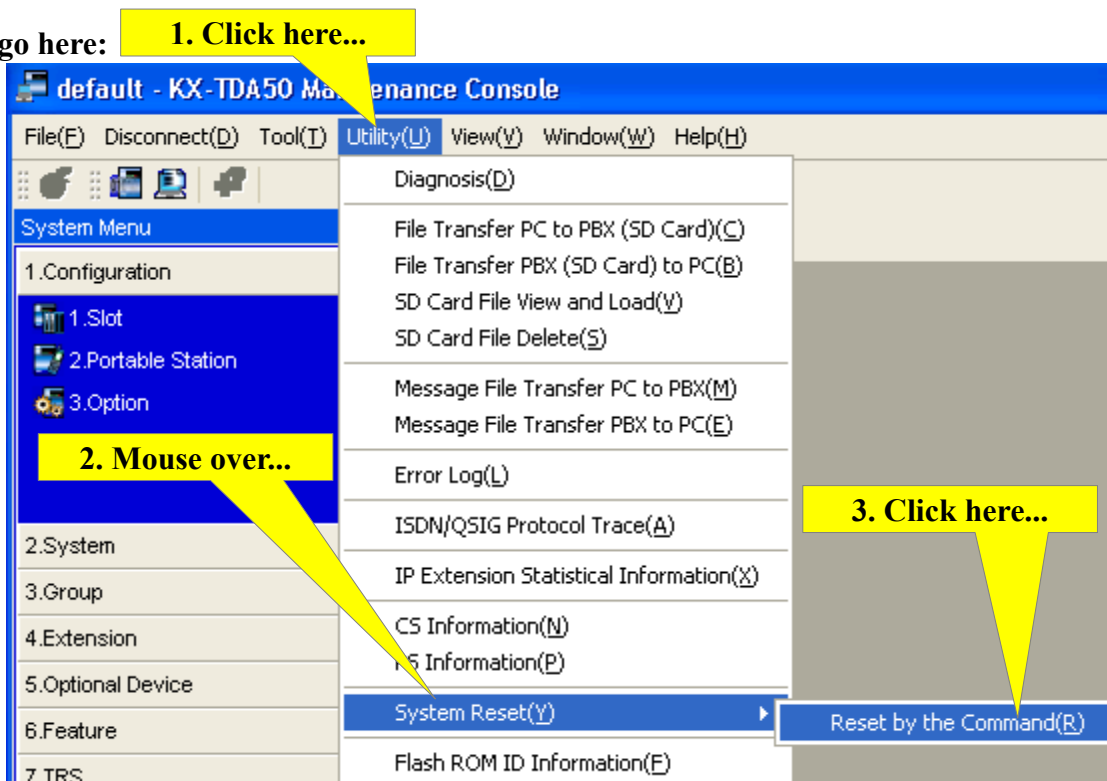
You will see this:



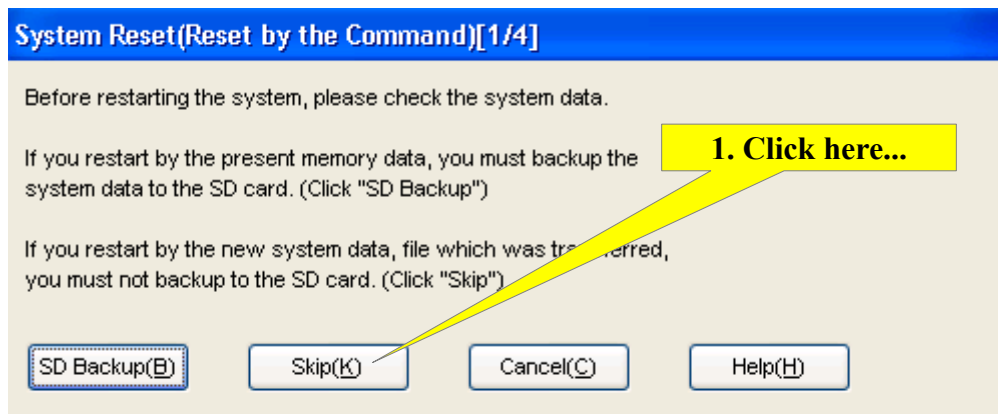
Then this:



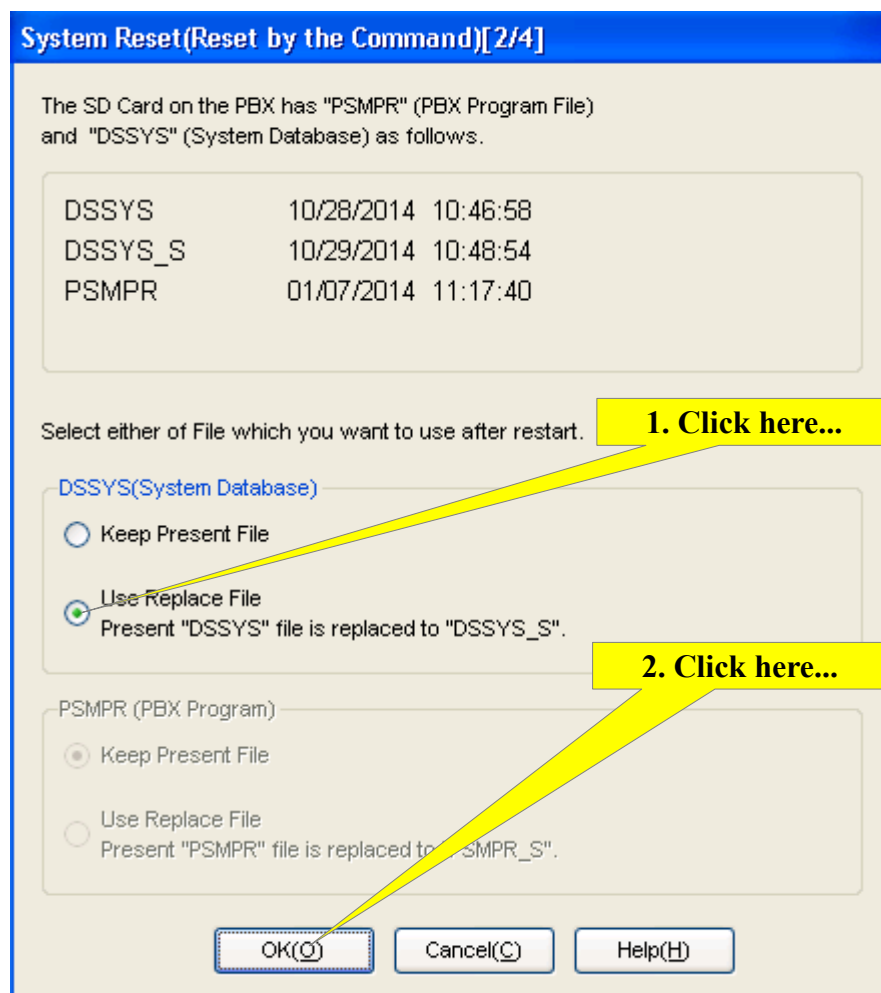
Next, go here:



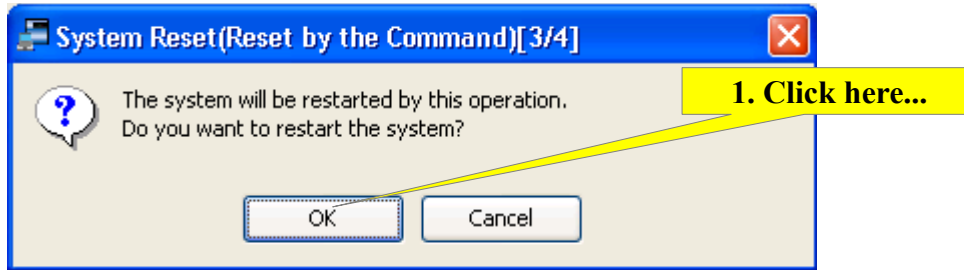
Note: This will reboot/restart the KSU. All calls will be cut off.....



You will see this:



Then this...



Then this...



The Panasonic Programming Tool will shut down.
Once the KSU comes back on, you can reconnect to it.
Then go to Page 3 and verify that the Update is correct.

You will need to Re-Register (Unlock) the KSU once the update has completed.
The phones will not work until the new Registration File has been installed into the upgraded KSU.

Before you begin the upgrade, get the Flash ROM ID number and send it to Telquest.
We will generate the Registration File in advance and email it to you.
This way you can complete the upgrade quickly with minimum down time.

To get the Flash ROM number:
Click on Utility(U) from the UPCMCM Programming Tool
The select Flash ROM ID Information(F)
Send the Flash ROM ID number to us.

